



# Thermo-PANEL PLUS INSTALLATION INSTRUCTION

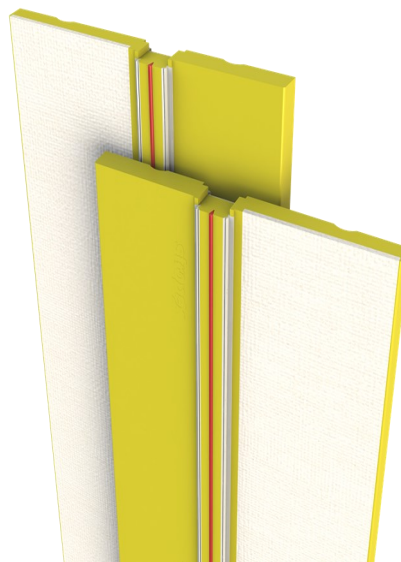
**25** LAT GWARANCJI  
YEARS QUARANTEE



## Product designation

### Components of STROPEX EMO Thermo-PANEL System

Thermo-PANEL code	Thermo-PROFILE code	Thermo-WINDOWSILL code	System
VA01-PL38	VA01-LA30	VA01-PT38	VEKA
AT01-PL38	AT01-LA30	AT01-PT38	ALUPLAST
SO01-PL38	SO01-LA30	SO01-PT38	SCHUCO
DX01-PL38	DX01-LA30	DX01-PT38	DRUTEX
GA01-PL38	GA01-LA30	GA01-PT38	GAELAN
SA01-PL38	SA01-LA30	SA01-PT38	SALAMANDER BE
A801-PL38	A801-LA30	A801-PT38	ALUPLAST 8000



### Preparation of window or door opening for the joinery installation

The substrate must be sound, even and free from dirt. The cement, cement-lime, and adhesive groundworks should be cured and seasoned.

It is not permitted to install the window and door joinery in untreated openings.

### Installation conditions

Installation works should be performed in the conditions appropriate for building the insulation and installation materials in (the materials such as: RED PUR assembly foam, universal positioning spreaders URP, mechanical or chemical fasteners, assembly adhesives and other materials in accordance with the technical data sheets of these products).

Protective measures, according to health and safety rules, must be employed during the works. Regarding application of other materials, especially sealing mortars, adhesive mortars, field welds, assembly tapes, flexible sealings, assembly foams, mechanical or chemical fasteners and others, there should be applied the materials adequate for applications related to window and door joinery installation in compliance with the rules present in the technical data sheets of the products or other, required by law reference documents.

The producer is not liable for damage resulting from improper use of the product, application of improper accompanying materials and use of improper tools.

The works must be performed in compliance with the project, technical data sheet, applicable standards, construction craft rules, health and safety rules.

Mechanical fasteners should be used according to the standards binding in a particular country.

### Application

EMO Panel System PLUS is a modern, energy-efficient system of window and door joinery installation. It complies with the European norms on energy-efficiency and passiveness.

Made of PVC filled with closed-cells rigid polyurethane foam and a dedicated seal, together with its specially shaped profile enables proper, tight and warm joint during window and door joinery installation and a warm finish of a window opening thanks to application of a MgO board.

An application of universal positioning spreader URP enables precise and safe setting the position of a window in the window opening.

RED PUR construction foam is an installation - construction and insulation element at once.

### Tools

Measuring tool, handsaw or electric saw, knife, low-speed electric drill or agitator, basket paddle, stainless steel smoothing trowel, brush or masonry brush, scraper or trowel, masonry bucket.

### Operational recommendations

After installation the product is not subject to any operational service.

Thermo-WINDOWSILL's resistance to UV radiation is 14 days. Thermo-WINDOWSILL can be protected against UV rays by covering it with acrylic paint. Before applying the paint, Thermo-WINDOWSILL's surface should be roughened with a sandpaper.

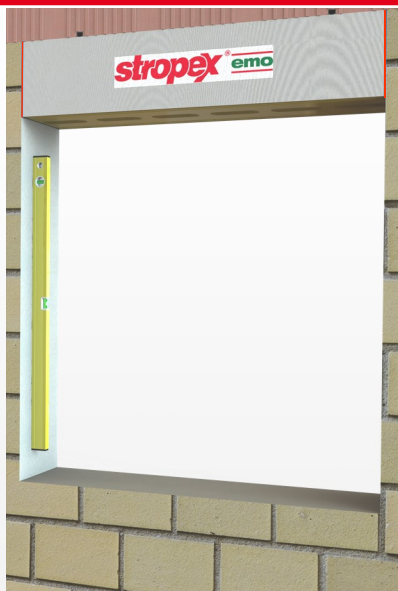
**IMPORTANT:** Discolouration resulting from UV solar radiation and little air bubbles present in the solid mass of a polyurethane foam do not influence technical conditions of a Thermo-WINDOWSILL, they have only aesthetic dimensions.

**NOTE: INSTRUCTION FOR TWO VARIANTS OF THERMO-WINDOWSILL INSTALLATION**





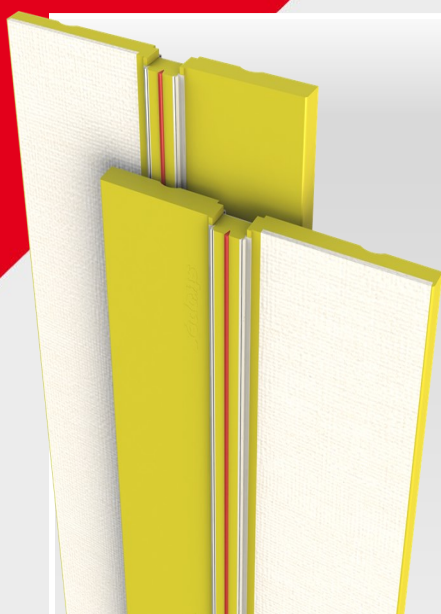
Preparation of a window or door opening for the joinery installation. It is not permitted to install the window and door joinery in untreated openings.



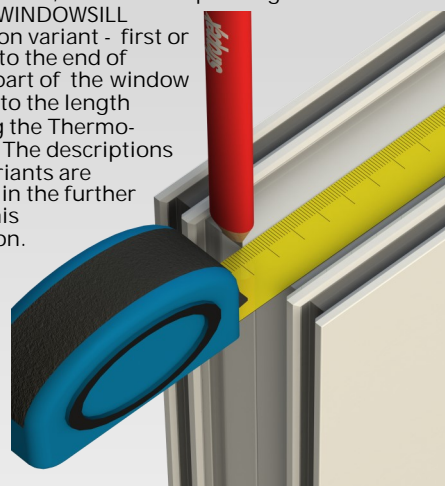
A substrate prepared for a Thermo-PANEL or a Thermo-WINDOWSILL installation must be sound, even and free from dirt. The cement, cement-lime, and adhesive groundworks should be cured and seasoned.



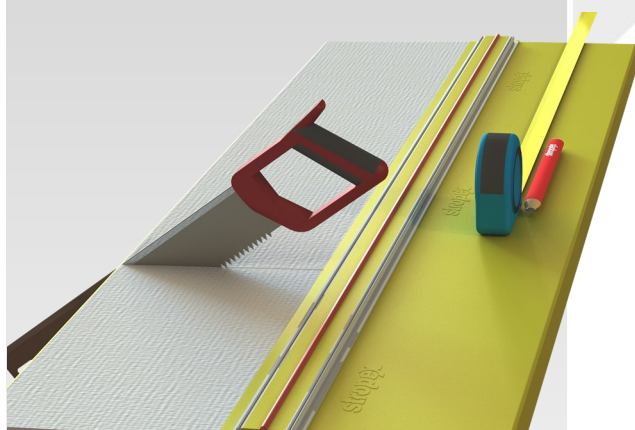
Every Thermo-WINDOWSILL is available in a left-side and a right-side variant with an adequate clasp in the upper part. The clasps serve for creating a tight connection in the upper corners of the window.



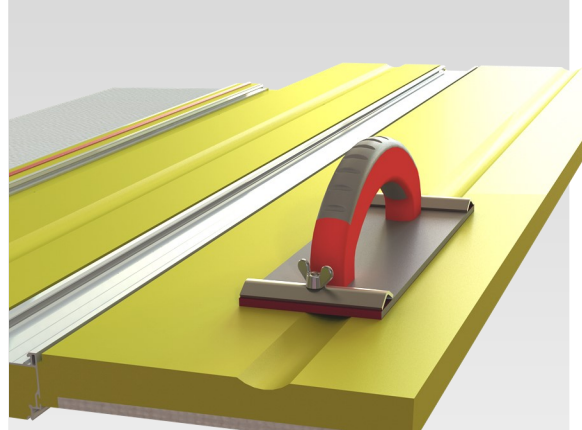
Thermo-PANEL dimensioning. Side Thermo-PANEL should be dimensioned to the length measured from the internal part of a window frame on the top to the lower part of the window frame, and here - depending on the chosen Thermo-WINDOWSILL installation variant - first or second, to the end of internal part of the window frame or to the length including the Thermo-PROFILE. The descriptions of the variants are included in the further part of this instruction.



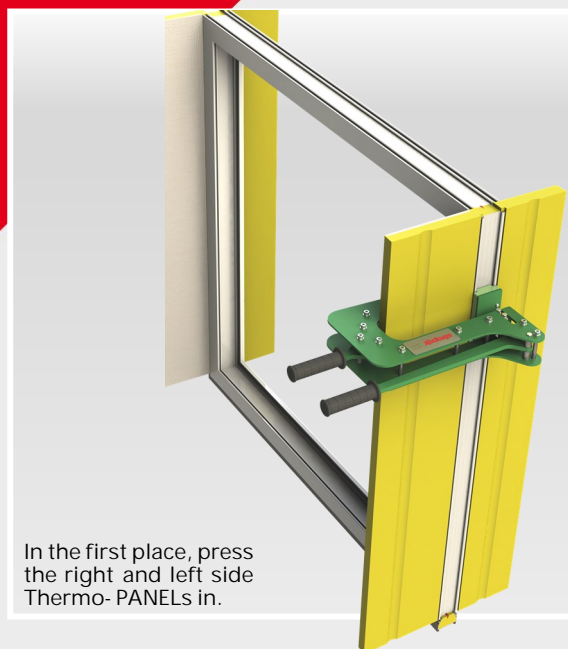
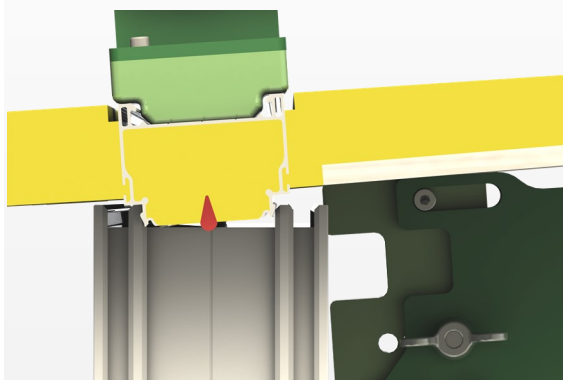
After dimensioning the length of the Thermo - PANEL , cut it manually or mechanically to required dimension.



In order to increase adhesion of a foam to the Thermo -PANEL 's surface , roughen the Thermo -PANEL 's internal part manually with a sandpaper or mechanically with, for example, an orbital sander.



Before pressing the Thermo-PANEL in, pay a great attention to proper setting of the Thermo -PANEL in the window frame's profile.

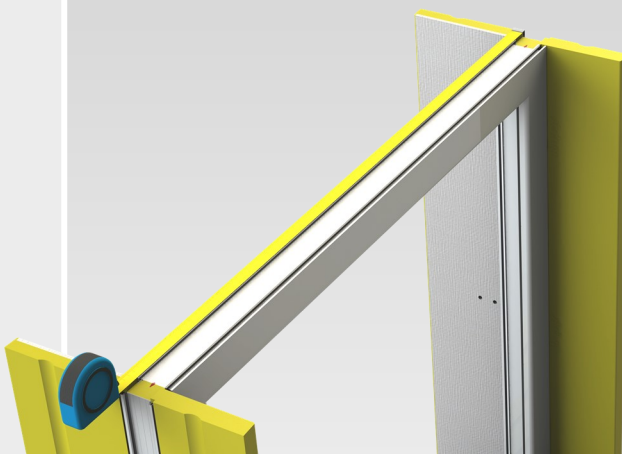


In the first place, press the right and left side Thermo- PANELS in.

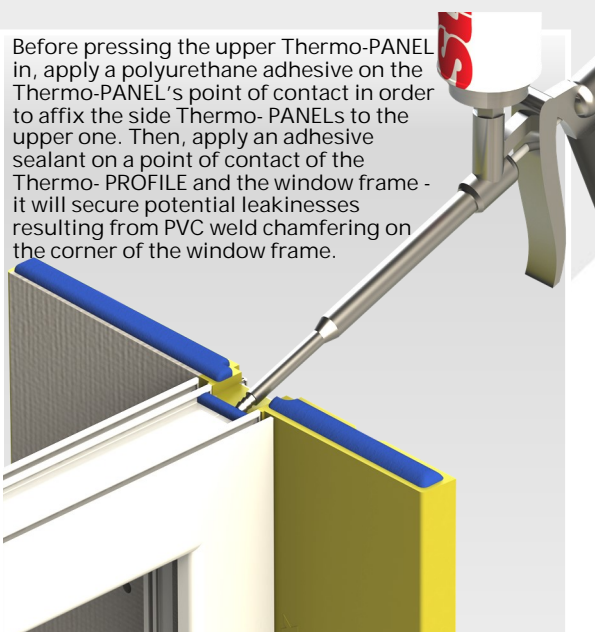
During pressing in, pay a great attention to the setting of the Thermo-PANEL's lower clasp and the internal part of the window frame's profile. They should be in alignment with each other.



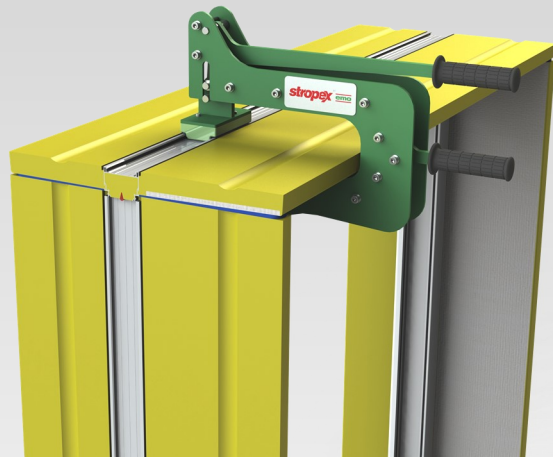
Measure the upper Thermo -PANEL 's length with the side Thermo -PANELS already pressed in. Measure its full length including the edges of the side Thermo-PANELS.



Before pressing the upper Thermo-PANEL in, apply a polyurethane adhesive on the Thermo-PANEL's point of contact in order to affix the side Thermo- PANELS to the upper one. Then, apply an adhesive sealant on a point of contact of the Thermo- PROFILE and the window frame - it will secure potential leakinesses resulting from PVC weld chamfering on the corner of the window frame.



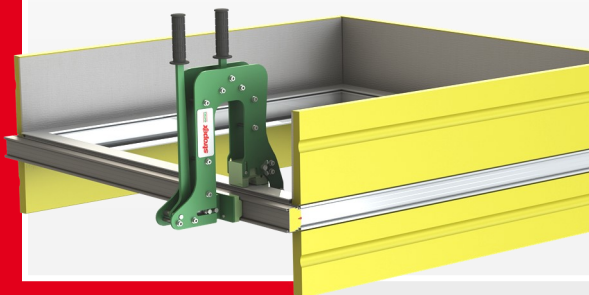
After applying the adhesive sealant and adhesive, press the upper Thermo -PANEL in the window frame 's profile, making sure the edges of the upper Thermo -PANEL are in alignment with the side Thermo-PANELS.



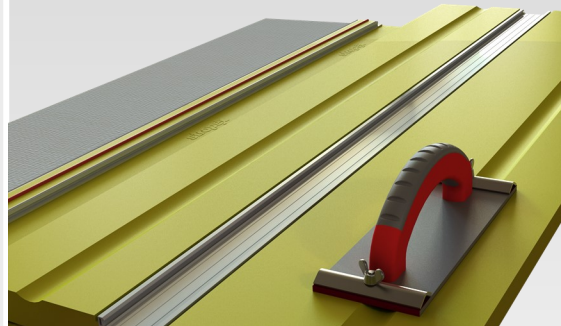
# Thermo-WINDOWSILL - variant I "with a cut wing"

In order to press the Thermo -PROFILE in, lie down the entire window frame (with the Thermo -PANELS already pressed in) sidewise with the internal parts up.

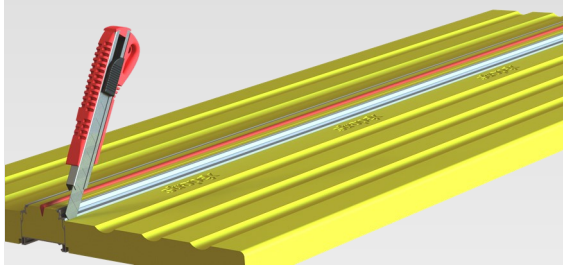
In this variant , cut the Thermo -PROFILE to the length of the window frame 's external dimension including the ends of the sideThermo-PANELS.



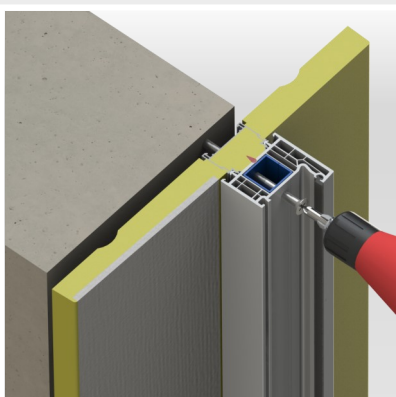
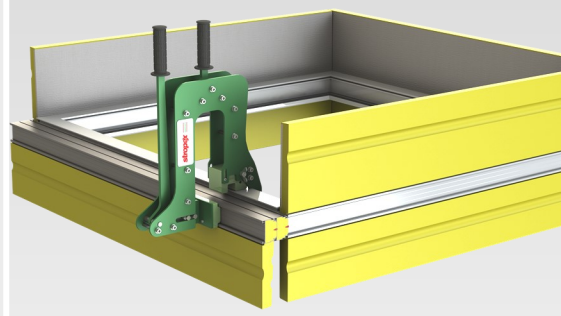
In order to increase adhesion of the foam to the Thermo -PANEL 's surface , roughen its internal surface manually with a sandpaper , or do it mechanically with for example an orbital sander.



In the case when the substrate is uneven , we recommend cutting the internal wing of the Thermo -WINDOWSILL with a sharp knife.



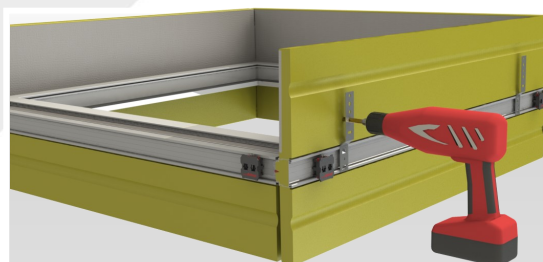
Press the external part of the Thermo-WINDOWSILL in the prepared, assembled window set.



Then , choose the way of mechanical installation:

Installation with assembly dowels

should be performed in compliance with standards binding in a particular country. The installation should be performed with use of proper dowels , chosen with regard to material of wall in which the window will be installed.



Installation with assembly anchors.

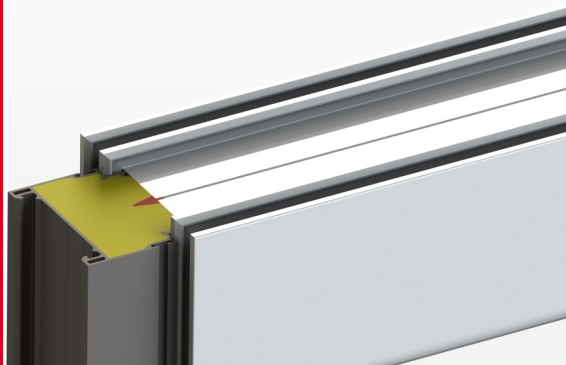
Installation should be performed in compliance with norms binding in a particular country. Affix the anchors mechanically with the flat headed self - drilling screws to the frame reinforcement and drill through the anchors in order to determine the places of affixing the anchors through the Thermo-PANEL. At this stage , affix also the universal positioning spreaders URP (picture with URPs ' spacing on page 9).



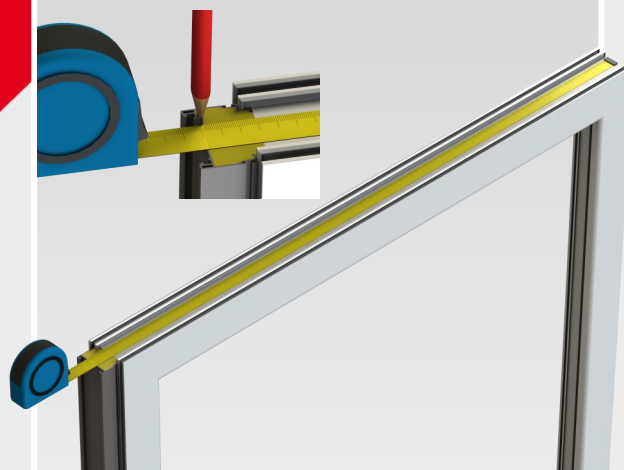
# Thermo-WINDOWSILL - variant II

## "a complete Thermo-WINDOWSILL"

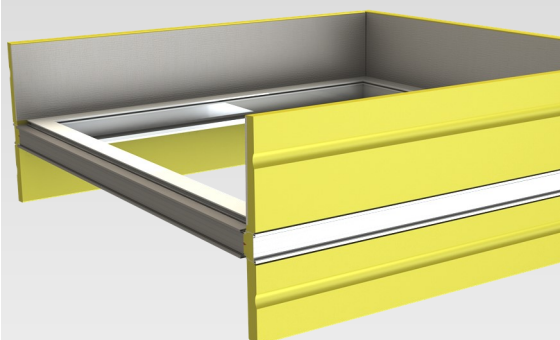
If you decided on delivery of a window already equipped with a Thermo-PROFILE, directly from the producer, the Thermo-PROFILE's length should equal the internal part of a window frame.



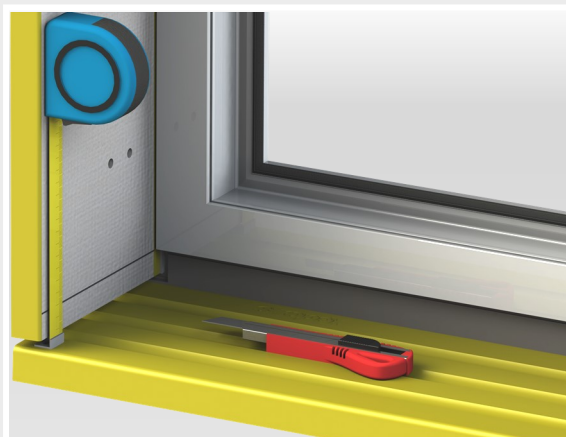
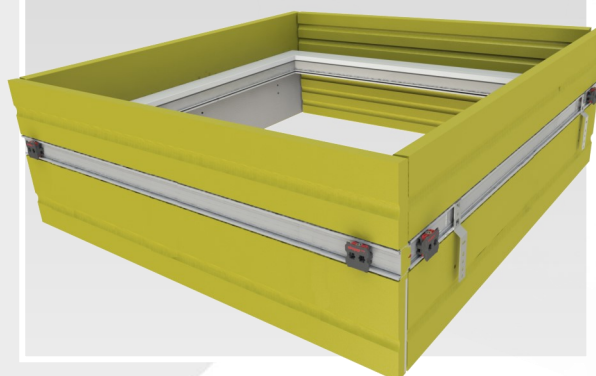
Cut the side Thermo-PANELS to the length measured from internal part of the window frame to internal part of the Thermo-PROFILE, remembering that the length of Thermo-PANEL should be measured from the internal part of the sealing clasp.



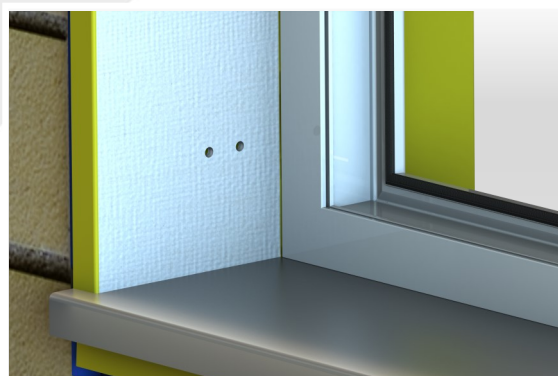
Install the Thermo-PANELS following the guidelines, as in the beginning.

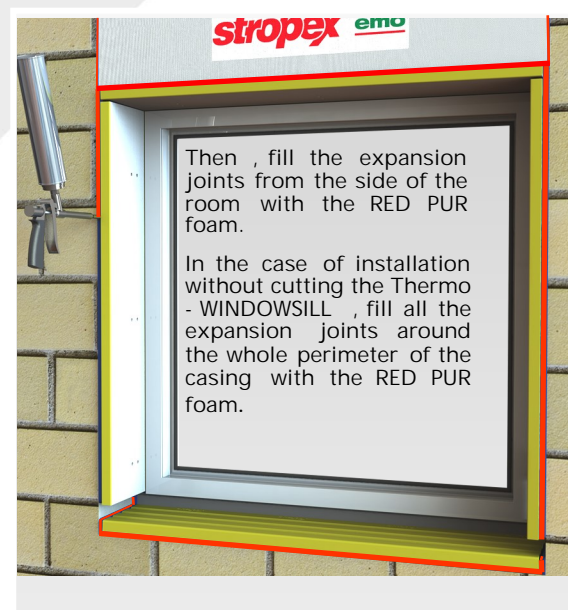
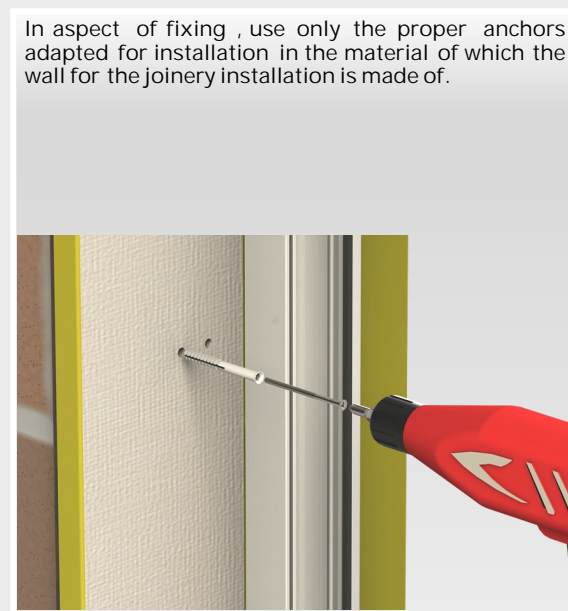
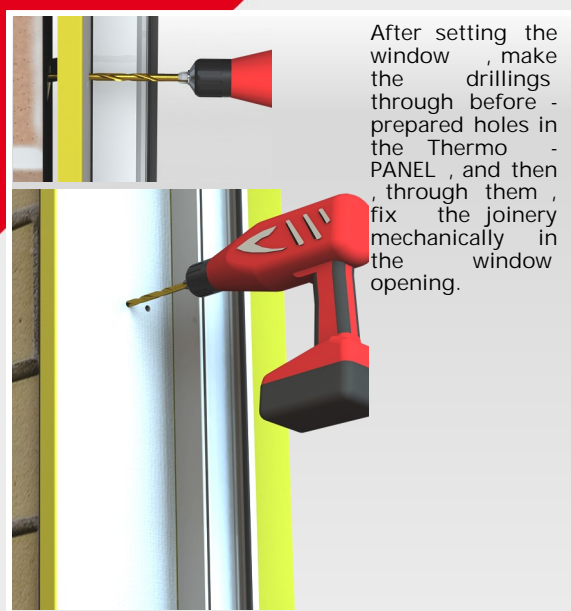
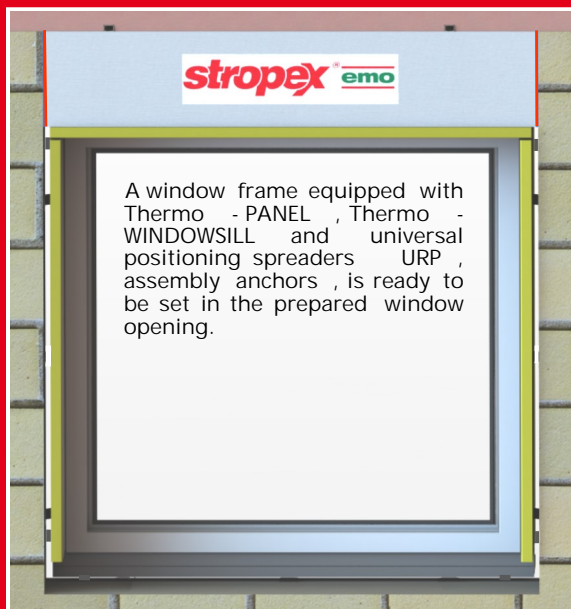


In the case when the substrate is even and guarantees stable installation of a window, a complete Thermo-WINDOWSILL can be pressed in. Then, install the anchors in compliance with norms binding in a particular country, and universal positioning spreaders URP as in the variant I.



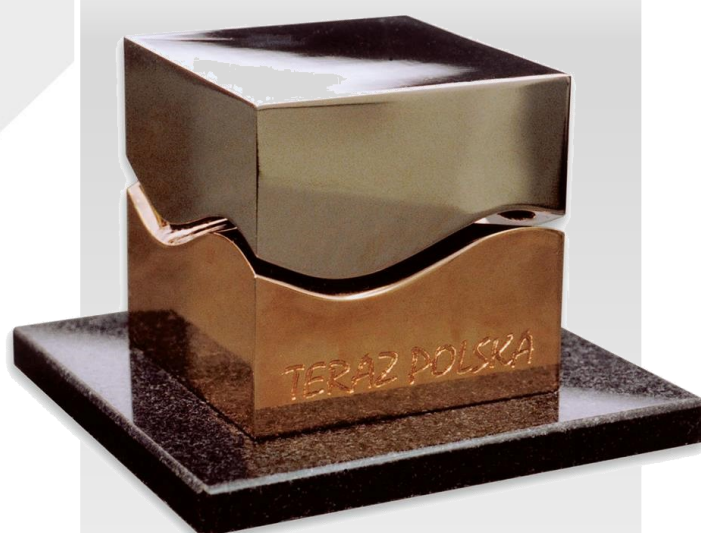
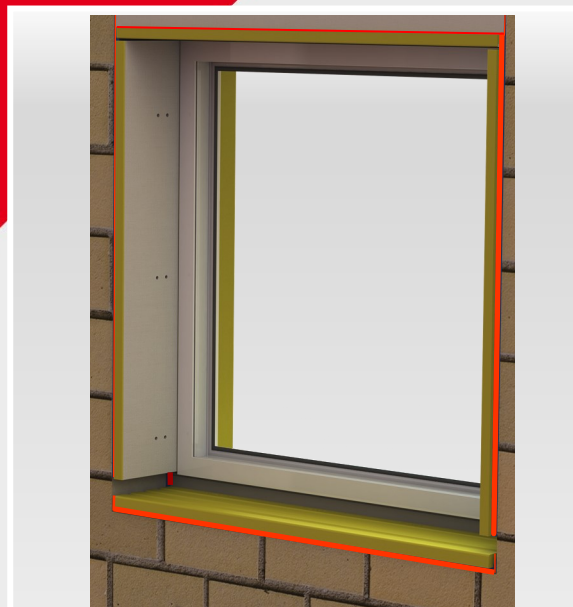
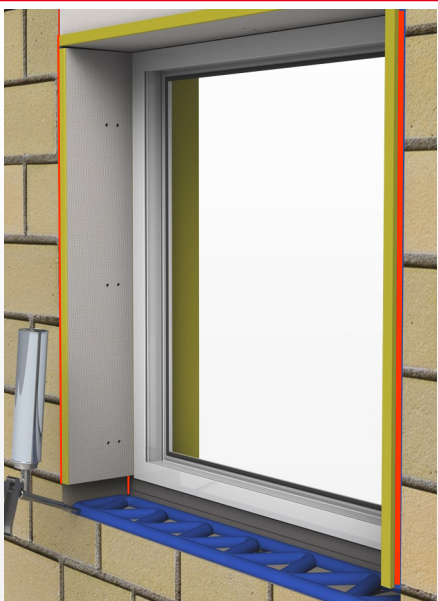
In the case of the internal Thermo-WINDOWSILLS installation, there is a possibility of cutting the side Thermo-PANELS to required dimensions resulting from applied internal Thermo-WINDOWSILL.



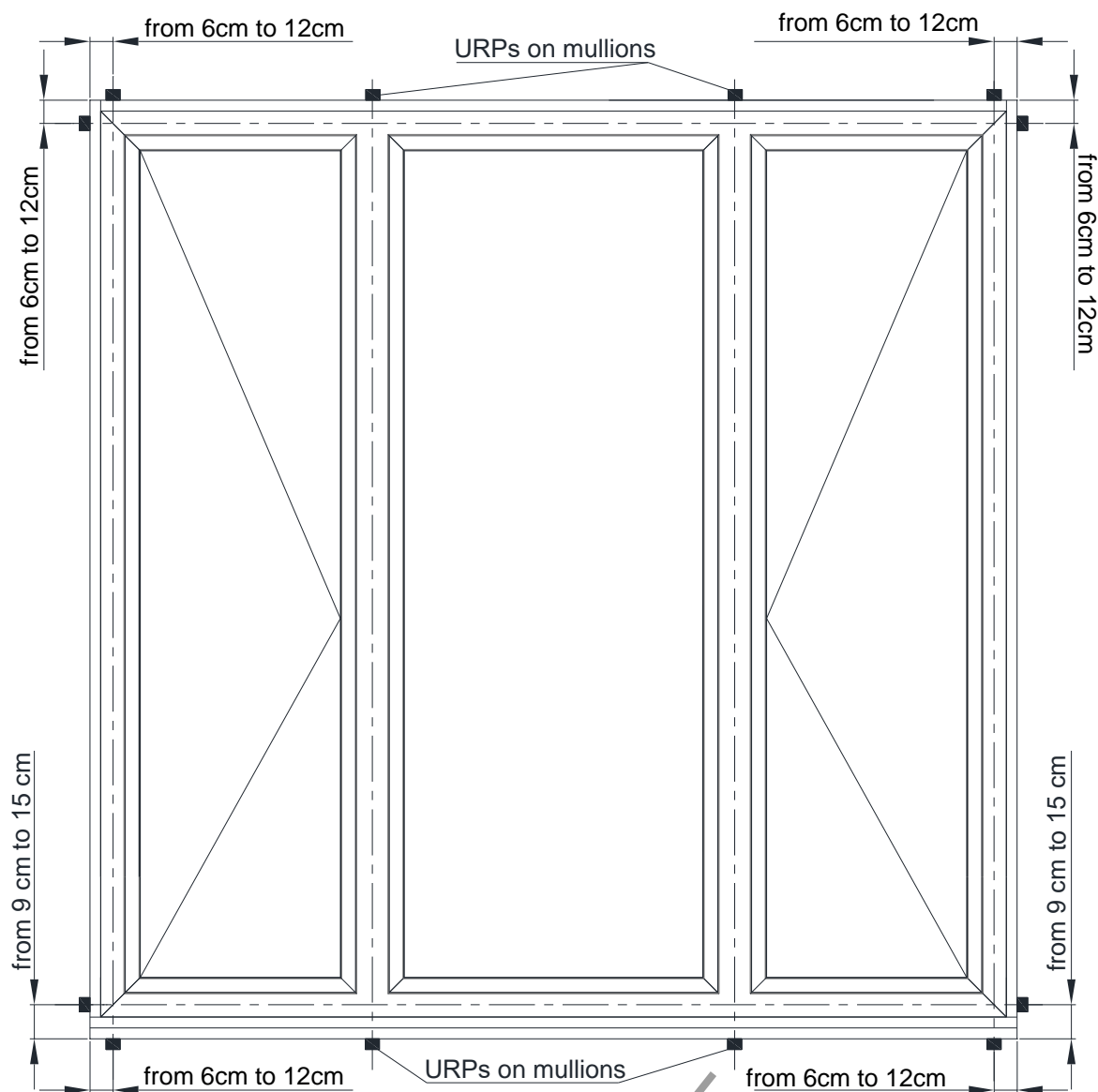




When it comes to installation of the version with the cut wing, apply a foam-adhesive to affix the cut wing of the Thermo - WINDOW-SILL.









**25** LAT GWARANCJI  
YEARS QUARANTEE



**Technical approvals:**

AT-15-9681/2016

AT- 15-9629/2016

ITB- KOT-2017/0019

[www.stropex.pl/en](http://www.stropex.pl/en)

**stropex<sup>®</sup>** **emo**

**P.P.H.U. Stropex Sp.j**

63-300 Pleszew

ul. Piaski 39

+48 62 742 73 58

stropex@stropex.pl